



**India Meteorological Department
(Ministry of Earth Sciences)**

NATIONAL BULLETIN NO. 21 (LAND/02/2024)

TIME OF ISSUE: 0930 HOURS IST

DATED:29.08.2024

FROM: INDIA METEOROLOGICAL DEPARTMENT (FAX NO. 24643965/24699216/24623220)

TO: CONTROL ROOM, NDM, MINISTRY OF HOME AFFAIRS (FAX.NO. 23093750)

CONTROL ROOM NDMA (FAX.NO. 26701729)

CABINET SECRETARIAT (FAX.NO.23012284, 23018638)

PS TO HON'BLE MINISTER FOR S & T AND EARTH SCIENCES (FAX NO.23316745)

SECRETARY, MOES (FAX NO. 24629777)

H.Q. (INTEGRATED DEFENCE STAFF AND CDS) (FAX NO. 23005137/23005147)

DIRECTOR GENERAL, DOORDARSHAN (23385843)

DIRECTOR GENERAL, AIR (23421105, 23421219)

PIB MOES (FAX NO. 23389042)

UNI (FAX NO. 23355841)

D.G. NATIONAL DISASTER RESPONSE FORCE (NDRF) (FAX NO. 26105912, 2436 3260)

DIRECTOR, PUNCTUALITY, INDIAN RAILWAYS (FAX NO. 23388503)

CHIEF SECRETARY, ODISHA (FAX NO. 0674-2536660)

CHIEF SECRETARY, WEST BENGAL (FAX NO. 033-22144328)

CHIEF SECRETARY, JHARKHAND (FAX NO. 0651-2400255)

CHIEF SECRETARY, BIHAR (FAX NO. 0612-2217085)

CHIEF SECRETARY, MADHYA PRADESH (FAX NO. 0755-2441076)

CHIEF SECRETARY, RAJASHTHAN (FAX NO. 0141-2227114)

CHIEF SECRETARY, MAHARASHTRA (FAX NO. 022- 22028594)

CHIEF SECRETARY, GUJARAT (FAX NO. 079-23250305)

CHIEF SECRETARY, DAMAN & DIU (FAX NO. 0260-2230775)

CHIEF SECRETARY, DADRA & NAGAR HAVELI (FAX NO. 0260-2645466)

CHIEF SECRETARY, GOA (FAX NO. 0832-2415201)

Sub: Deep Depression over Saurashtra & Kachchh

The deep depression over Saurashtra & Kachchh moved slowly westwards with a speed of 3 Kmph during past 6 hours and lay centered at 0530 hours IST of today, the 29th August over the same region near latitude 23.7°N and longitude 69.5 °E, 60 km north-northwest of Bhuj (Gujarat), 80 km northeast of Naliya (Gujarat) and 270 km east-southeast of Karachi (Pakistan).

It is likely to move west-southwestwards, emerge into northeast Arabian Sea off Kachchh and adjoining Saurashtra & Pakistan coasts and intensify into a Cyclonic Storm on 30th August. Thereafter, it would continue to move nearly west-southwestwards over northeast Arabian Sea away from Indian coast during subsequent 2 days.

Warnings:

(i) Rainfall Warning:

Gujarat State:

Saurashtra & Kachchh: Light to moderate rainfall at most places with heavy to extremely heavy rainfall at isolated places on 29th, heavy to very heavy rainfall at isolated places on 30th August and heavy rainfall at isolated places over coastal districts on 31st August.

(ii) Wind warning:

- Squally wind speed reaching 45-55 kmph gusting to 65 kmph is likely over the districts of South Gujarat Region and Saurashtra & Kutch on 29th & 30th August.
- Squally wind speed reaching 55-65 kmph gusting to 75 kmph is very likely to prevail along & off Gujarat coasts & adjoining Pakistan coasts and over northeast & adjoining eastcentral Arabian Sea during 29th to 31st August.
- Gale wind speed reaching 65-75 kmph gusting to 85 kmph is likely to prevail over northeast Arabian Sea off Gujarat and Pakistan coasts from 30th August till 1st September.
- Gale wind speed reaching 65-75 kmph gusting to 85 kmph is likely to prevail over northwest and adjoining westcentral Arabian Sea off Pakistan and southeast Iran coasts from 31st August till 2nd September.
- Strong wind speed reaching 40-50 kmph gusting to 60 kmph is likely to prevail along and off north Maharashtra coasts during 29th to 31st August.

(iii) Sea condition:

- Squally weather with Rough to very Rough sea conditions is very likely to prevail along & off Gujarat & adjoining Pakistan and north Maharashtra Coasts till 31st August.
- Very rough to high sea condition is likely to prevail over northeast & adjoining eastcentral and Arabian Sea off Gujarat and Pakistan coasts during 29th to 31st August.
- Very rough to high Sea condition is likely to prevail over northwest and adjoining westcentral Arabian Sea off Pakistan and southeast Iran coasts from 31st August till 2nd September.

(iv) Fishermen warning:

- Fishermen are advised not venture into
 - Northeast & adjoining Eastcentral Arabian Sea and along & off Gujarat & adjoining Pakistan and north Maharashtra Coasts till 31st August.
 - Northwest & adjoining westcentral Arabian Sea and along & off Pakistan and southeast Iran coasts from 31st August till 2nd September.

(v) Advisory for offshore/onshore Exploration and Production (E & P) Operators:

- The small ships and offshore -onshore E & P operators, shipping and port authorities along & off Gujarat & north Maharashtra Coasts and Northeast & adjoining Eastcentral Arabian Sea are advised to keep watch on developing weather and take necessary actions till 30th August.

(vi) Impact Expected

- Localized Flooding of roads, water logging in low lying areas and closure of underpasses mainly in urban areas of the above region.
- Occasional reduction in visibility due to heavy rainfall.
- Reduction of visibility over sea area due to sea spray induced by strong wind and heavy rainfall.
- Disruption of traffic in major cities due to water logging in roads leading to increased travel time.
- Minor damage to kutcha roads.
- Possibilities of damage to vulnerable structure.
- Localized Landslides/Mudslides/landslips/mud slips/land sinks/mud sinks.
- Damage to horticulture and standing crops in some areas due to inundation.
- It may lead to riverine flooding in some river catchments (for riverine flooding please visit Web page of CWC)

(vii) Action Suggested

- Fishermen are advised not venture into
 - Northeast & adjoining Eastcentral Arabian Sea and along & off Gujarat & adjoining Pakistan and north Maharashtra Coasts till 31st August.
 - Northwest & adjoining westcentral Arabian Sea and along & off Pakistan and southeast Iran coasts from 31st August till 2nd September.
- Judicious regulation of offshore/onshore Operations
- Judicious regulation of surface transports including railways and roadways.
- Check for traffic congestion on your route before leaving for your destination.
- Follow any traffic advisories that are issued in this regard.
- Avoid going to areas that face the water logging problems often.
- Avoid staying in vulnerable structure.

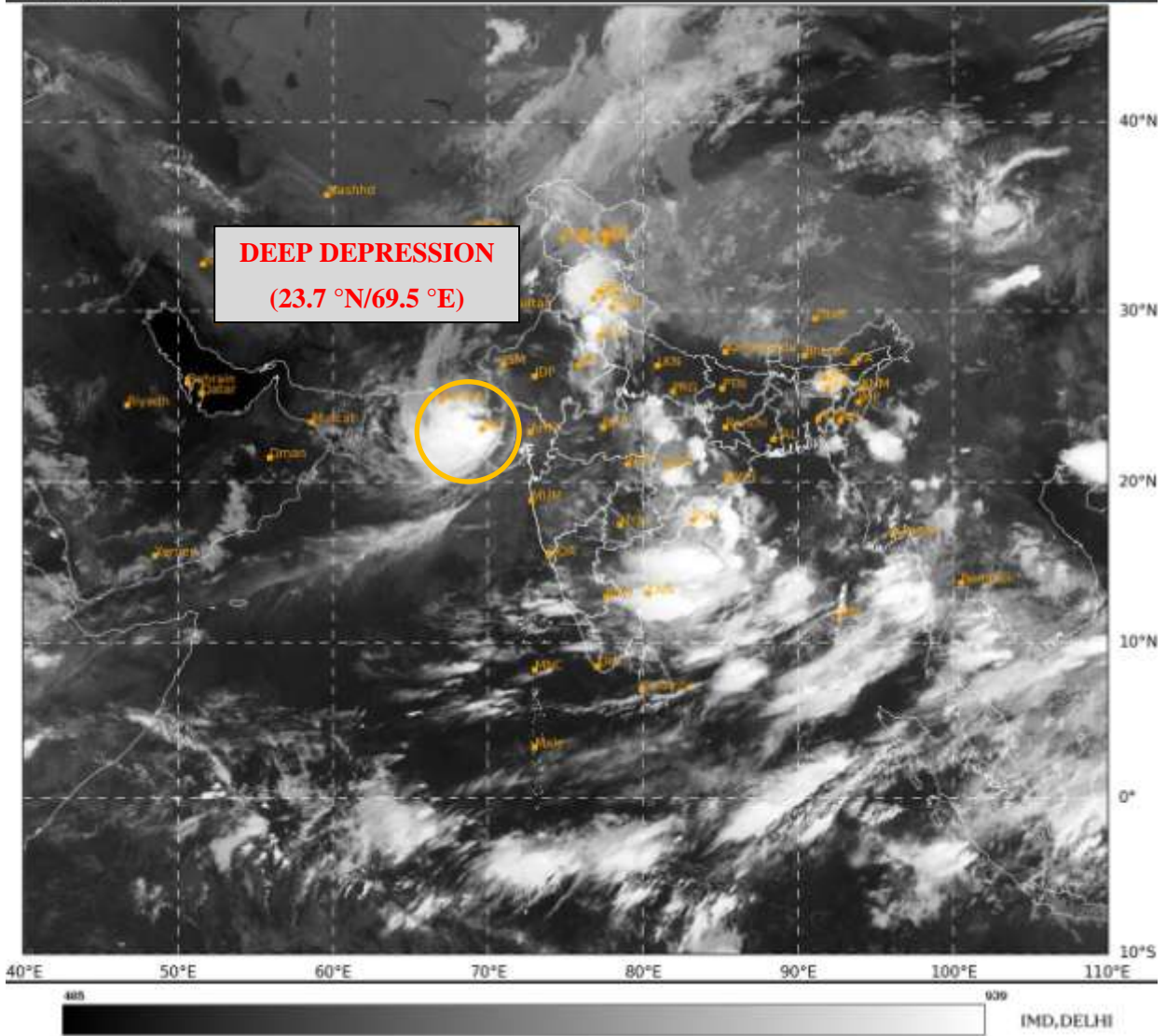
(viii) Agromet Advisories for Heavy Rainfall likely over Madhya Pradesh, South Rajasthan, Gujarat State and North Maharashtra

- Make provision for draining out excess water from crop fields to avoid water stagnation in Madhya Pradesh, South Rajasthan, Gujarat State and North Maharashtra.
- Provide mechanical support to horticultural crops and staking to vegetables.

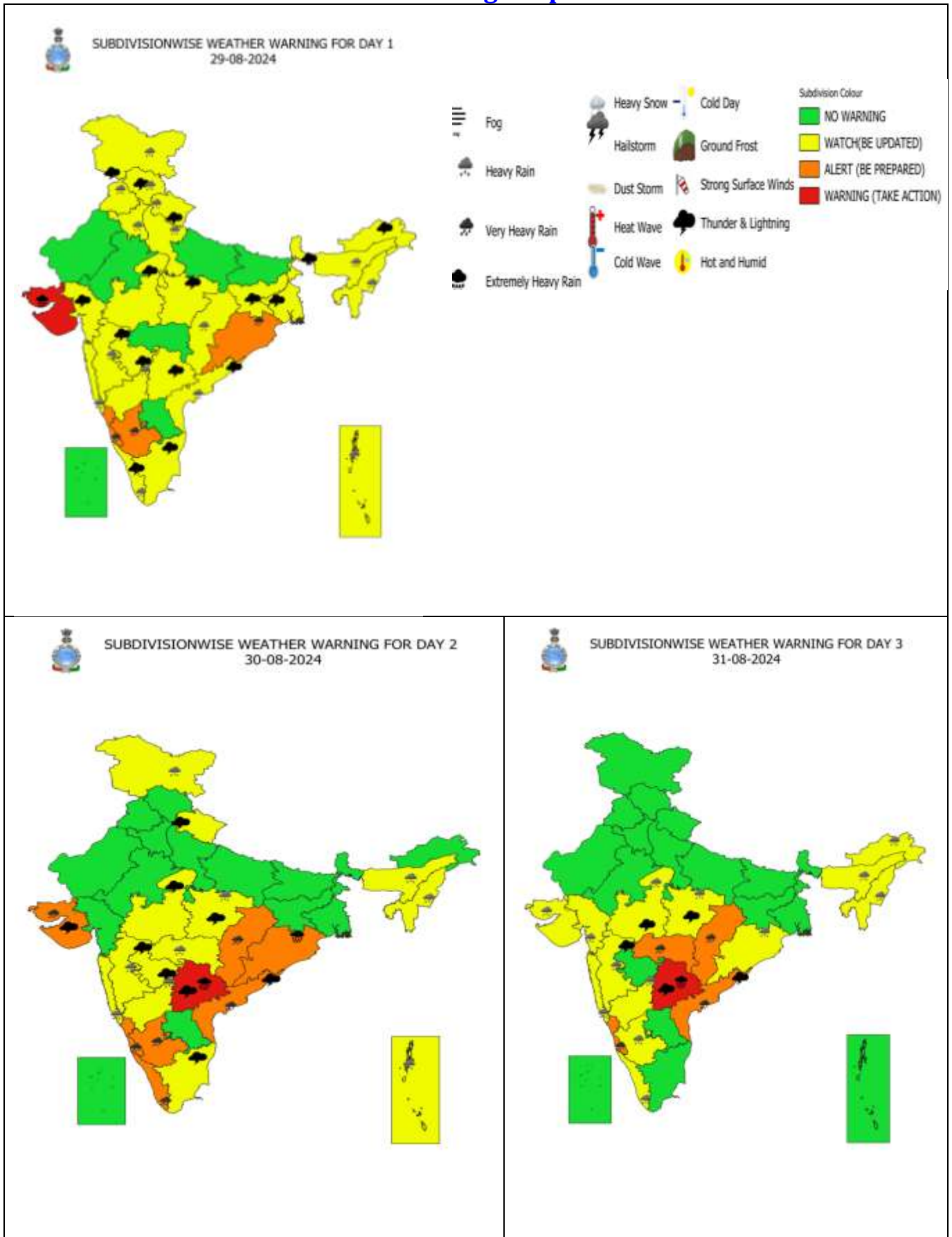
Next bulletin will be issued at 1130 hours IST of the 29th August, 2024.

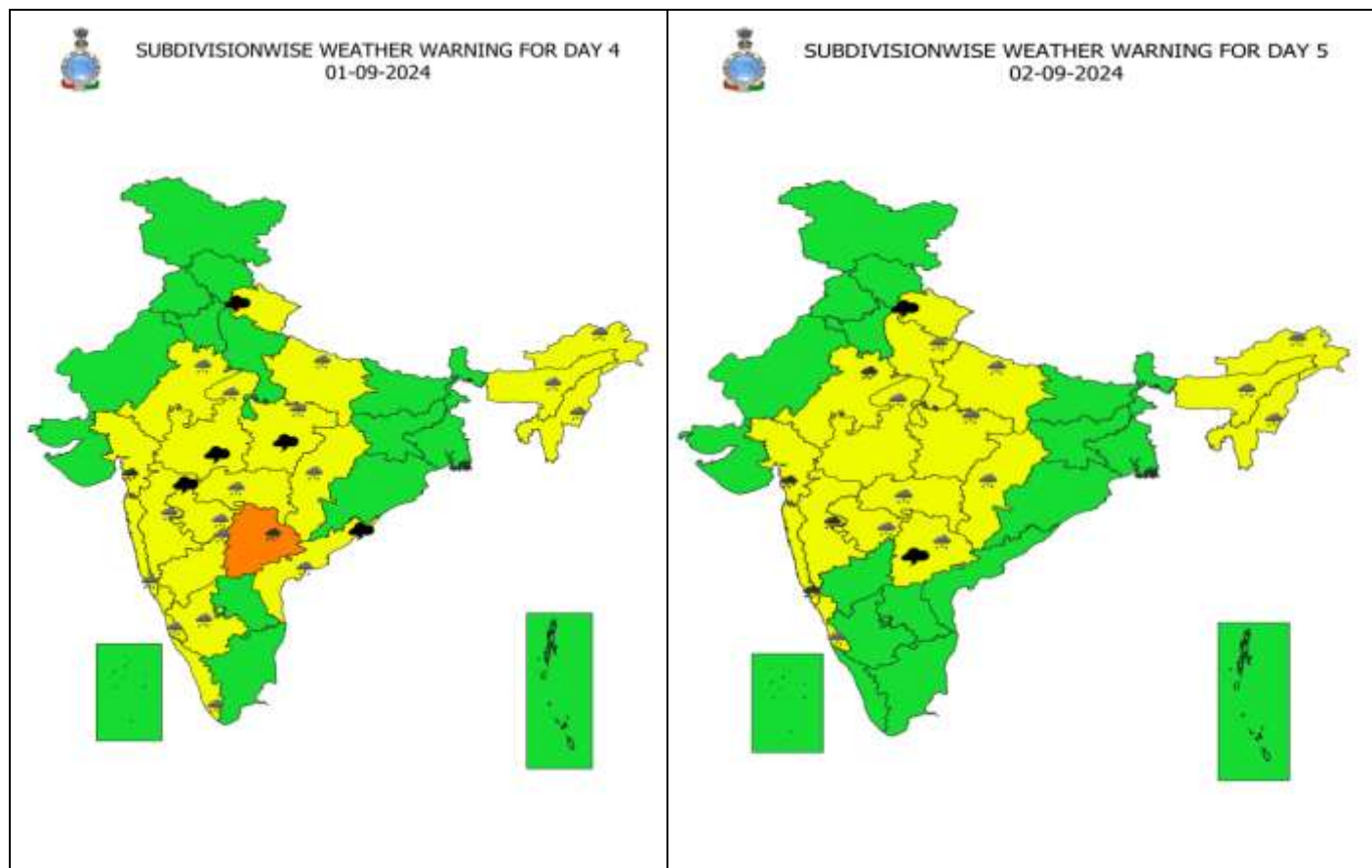
**(Dr. Ananda Kumar Das)
Scientist-F, Cyclone Warning Division,
IMD, New Delhi**

Copy to: ACWC Kolkata/ACWC Mumbai/RMC Mumbai/CWC Ahmedabad/MC Jaipur/RMC, Nagpur/MC, Bhopal//CWC Bhubaneswar/MC, Goa/MC, Ranchi



Weather Warning Graphics

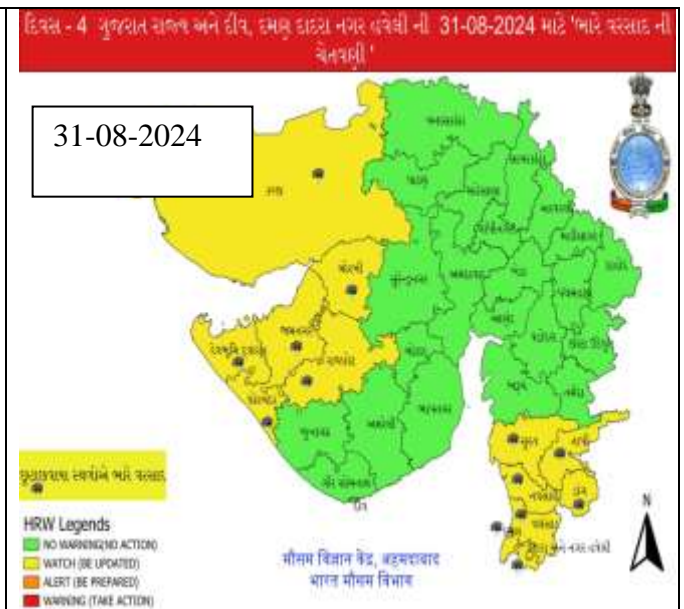
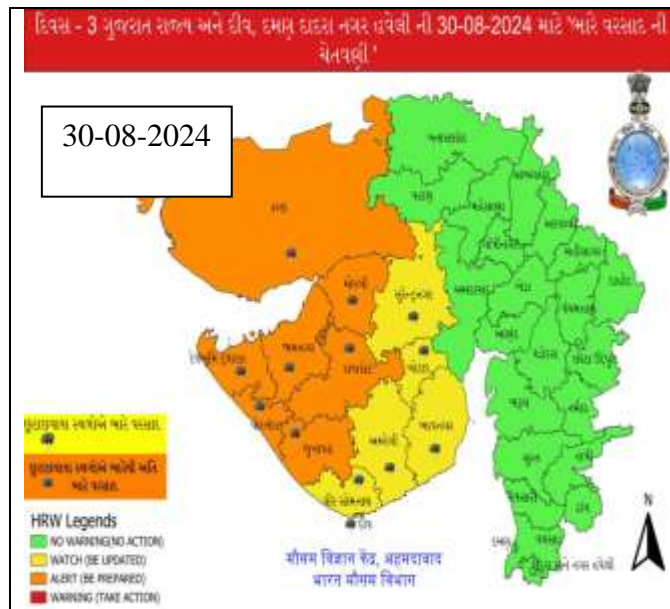
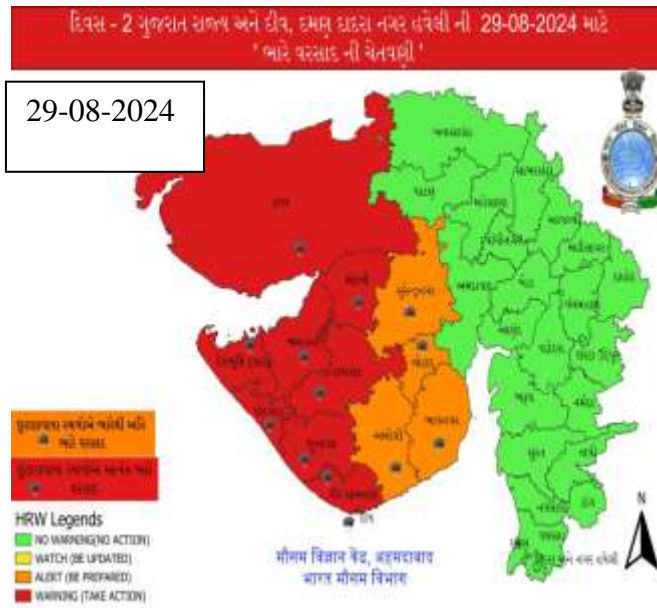




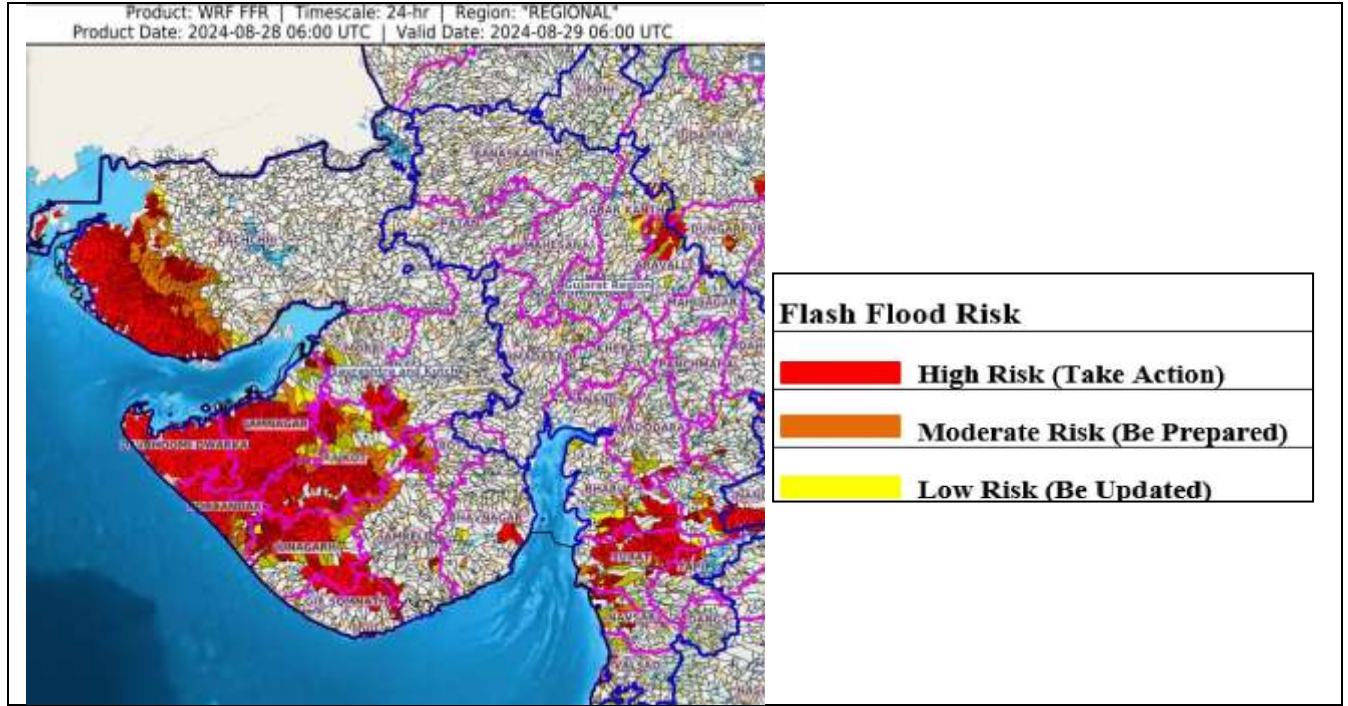
- Action may be taken based on **ORANGE AND RED** COLOUR warnings.
- Vulnerable regions likely urban and hilly areas action may be initiated for heavy rainfall warning.
- As the lead period increases forecast accuracy decreases.

District wise Warning Graphics

Gujarat



Flash Flood Guidance



24 hours Outlook for the Flash Flood Risk (FFR) till 1130 IST of 29-08-2024 :

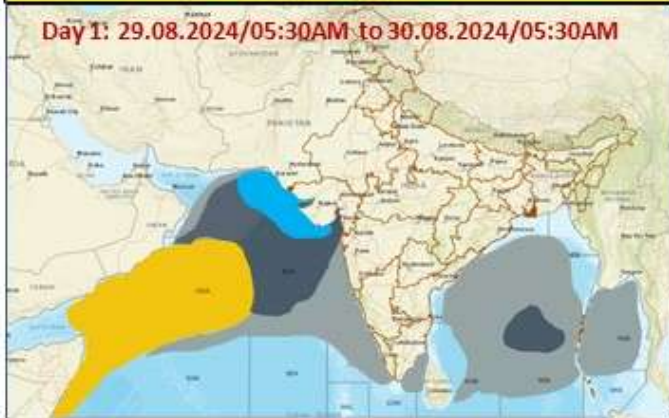
Moderate flash flood risk likely over few watersheds & neighbourhoods of following Met Sub-divisions during next 24 hours.

Gujarat Region - Daman, Aravalli, Bharuch, Chhota Udepur, Mahisagar, Narmada, Navsari, Sabar Kantha, Surat, Tapi, Vadodara and Valsad districts.

Saurashtra & Kutch - Amreli, Bhavnagar, Botad, Devbhoomi Dwarka, Diu, Gir Somnath, Jamnagar, Junagarh, Porbandar, Rajkot, Surendranagar, Morbi and Kachchh districts.

Surface runoff/ Inundation may occur at some fully saturated soils & low-lying areas over Area of Concern (AoC) as shown in map due to expected rainfall occurrence in next 24 hours.

Fishermen Warning Graphics



	Squally WX with wind speed 35-45 kmph gusting to 55 kmph
	Squally WX with wind speed 45-55 kmph gusting to 65 kmph
	Squally wind with speed 45-55 kmph gusting to 65 kmph
	Squally winds with speed 55-65 kmph gusting to 75 kmph
	Gale winds with speed 65-75 kmph gusting to 85 kmph

Fishermen are advised not to venture into the marked areas.